

STRATEGIC PLAN

July 1, 2023 –
June 30, 2026



Background

The Andy Hill Cancer Research Endowment (CARE) Fund was established by the Washington State Legislature in 2015 to promote cancer research in our state (RCW Chapter 43.348).

The legislation is authorized to appropriate funds each biennium to the CARE Fund to make grants to promote cancer research in Washington state. The Fund's objectives as enumerated by the Revised Code of Washington include the following:

- **Optimize the use of public funds by giving priority to research utilizing the best science and technology with the greatest potential to improve health outcomes**
- **Increase the value of our public investments by leveraging our state's existing cancer research facilities and talent, as well as clinical and therapeutic resources**
- **Incentivize additional investment by requiring private or other nonstate resources to match public funds**
- **Create jobs and encourage investments that will generate new tax revenues in our state**
- **Advance the biotech, medical device, and health care information technology industries in Washington**

The Andy Hill Cancer Research Endowment (CARE) Fund is named in honor of state Senator Andy Hill who was a dedicated legislator and public champion of cancer research.



Strategic Plan

Theory of Change: Developing and maintaining a thriving research culture is essential to improving cancer outcomes in Washington.

01

Domain 1: *Capacity*

Goal:

Build Washington's capacity for cancer research, allowing for sustainability and creativity through sufficient resources, including well-directed funding and a trained, diverse workforce to ensure a diversity of thought to drive innovation.

Objectives:

- **Maintain state investments in cancer research utilizing the best science and technology with the greatest potential to improve health outcomes**
- **Increase capacity of the cancer research workforce**
- **Increase leverage of public funds' nonstate match (secured from co-funders or other sources to reduce the burden of nonstate match on applicants)**
- **Increase diversity of CARE Board and advisory committee(s)**

Strategies:

- **Engage with cancer coalitions to support planning**
- **Utilize cancer registry data to identify cancer incidence based on population, race and ethnicity, and catchment areas, to inform program development**
- **Continue or create new grant opportunities for the recruitment and start-up investigators, and mentorship of junior investigators to benefit Washington's research capacity**
- **Explore launching an effort to invest in research to understand and bolster the resilience in the cancer workforce ecosystem**
- **Develop formal partnerships with other public funders and private funders to leverage resources, support innovative ideas, alleviate the match burden, etc.**
- **Board contributes to the development of a diverse list of potential nominees, that reflects the diversity of Washington and the governance needs of CARE Fund, to advance to the Governor**



02

Domain 2: *Collaboration and Transparency*

Goal:

Enhance collaboration and transparency that allows patients to make better-informed decisions, reduce wasted research and innovation time and effort, and make it easier to identify challenges and modify the system as needed.

Objectives:

- Increase generation and sharing of research findings
- Increase grantee and partner engagement
- Increase community engagement in cancer research

Strategies:

- Participate in Department of Health coalition informing Washington State’s five-year Cancer Plan
- Convene grantees or leverage existing gatherings for shared reporting to foster innovation and collaboration, engage grantees
- Pilot a diversity in clinical trials community engagement plan with at least one research partner (i.e., implementation of HB 1745)

03

Domain 3: *Innovation, Productivity, and Healthcare Delivery*

Goal:

Support innovation and productivity that ensures a critical volume of quality candidates come out of every stage of the research and innovation process and that diversity of effort is used to improve the odds of innovative discoveries.

Objectives:

- Increase economic benefit to the state of Washington by accelerating innovation and productivity
- Accelerate improvements in healthcare delivery through more data-informed policy development

Strategies:

- Maintain nimbleness by making funds more accessible to biotech, medical device, and health information technology applicants
- Invest the Board’s care and attention when structuring Intellectual Property (IP) mechanisms for IP and technology transfers resulting from CARE Fund support
- Provide Life Science Start-Up Development Research and other grant opportunities (to be determined) that target companies and/or facilitate the creation of new companies
- Maintain CARE Fund’s ability to be responsive to emergent issues through engagement with decision-makers and stakeholders



04

Domain 4: *Prevention, Equitable Access and Use*

Goal:

Advance equitable access and use to ensure that innovation reaches all who need it when they need it, from prevention to treatment.

Objectives:

- Increase access to care, including latest discoveries
- Reduce cancer risk and increase resilience
- Provide sufficient allocation of funding opportunities to address equitable access to and use of cancer care

Strategies:

- Cultivate relationships with local community-based cohorts to better understand and address community-identified priorities
- Understand how we can frame these conversations in terms that will advance care and access while enabling research, in a feed-forward way where successful research leads to better patient outcomes, and communities with better outcomes will be stronger partners for promoting cancer research
- Invest in population health research
- Create and provide grant opportunities that support/ promote research that aims to improve access to cancer care

Board of Directors*

As of July 1, 2023

J. Elaine Albert, MD, MHA
Seattle Children's Hospital

Frederick Appelbaum, MD
Fred Hutchinson Cancer Center

Cliff Berkman, PhD
Washington State University

Thomas Brown, MD, MBA, Board Treasurer
Syapse

David R. Byrd, MD, Board Chair
University of Washington

Marc Cummings
Life Science Washington

Steven Harr, MD
Sana Biotechnology

Eunice Hostetter
American Cancer Society Cancer Action Network

Jennifer Kampsula Wong, JD, Board Secretary
American Cancer Society Cancer Action Network

Gary Kaplan, MD
(Formerly) Virginia Mason Franciscan Health

Elizabeth Lawlor, MD, PhD, Board Vice Chair
Seattle Children's Research Institute

Maura Little
Echo Health Ventures

Karin Rodland, PhD
(Formerly) Pacific Northwest National Laboratory

*Organizational affiliations are for identification purposes only.

Staff

Laura Flores Cantrell
Executive Director

Peter Choi
Director of Program Design & Evaluation

Tasha Florez
Senior Program Officer

Jennifer Puttuck
Administrative Manager

Joseph Sparacio
Deputy Director

External Advisory Committee

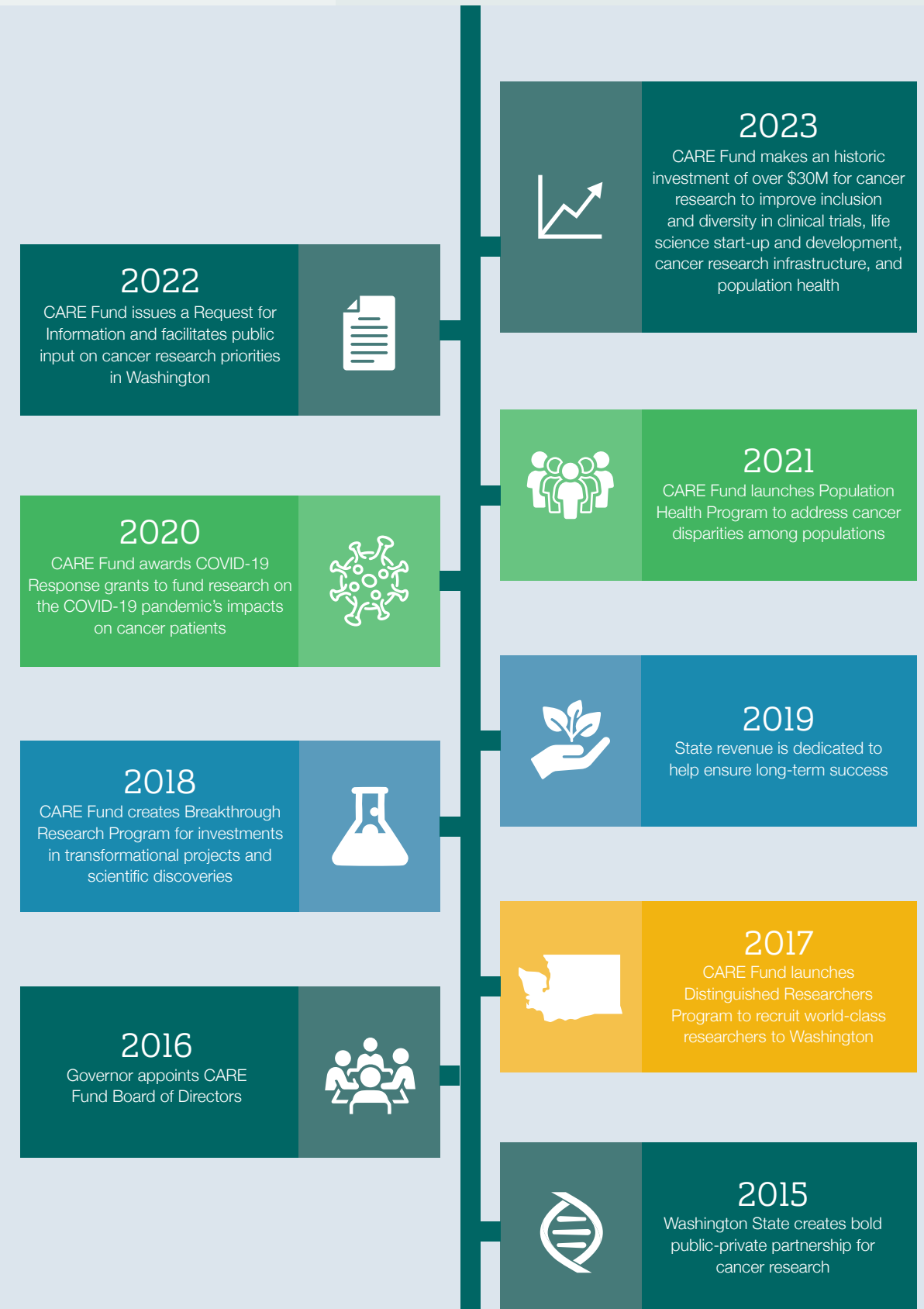
CARE Fund is grateful to the Strategic Planning External Advisory Committee, appointed in 2023 and made up of independent, nationally recognized experts in the scientific, clinical, ethical, commercial, and regulatory aspects of cancer research, prevention, and care to advise the endowment during the development and review of its strategic plans for cancer research.

Program Administrator

[Evergreen Social Impact](#) is the contracted program administrator for Andy Hill CARE Fund.

Timeline

(2015-2023)





Andy Hill CARE Fund

Washington's Cancer Research Endowment



Andy Hill CARE Fund
c/o Evergreen Social Impact
P.O. Box 429
Bothell, WA 98041

Copyright © 2024
www.wacarefund.org

